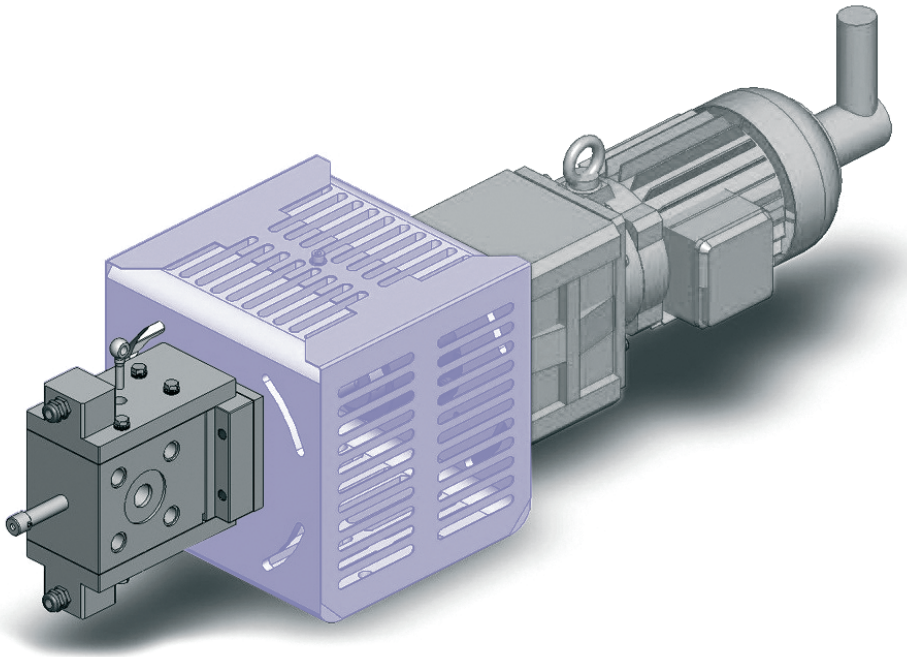


## Booster pumps



### Barmag booster pumps represent

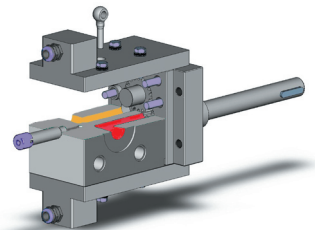
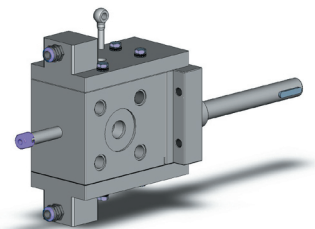
- **Increased throughputs for existing systems**
- **Compensation for pressure fluctuations**
- **Relief for the extruder**

The development of, e.g., capacitor films, films for audio and video tapes, packaging films, high-end monofilaments, drawn film tapes, gas pipes, window profiles, etc. is increasingly allowing far less product deviation or quality tolerances. Particularly in the case of the extrusion of profiles with very thin wall thicknesses or cabling mantles, the quality of the final product depends to a very high extent on the evenness and precision of the extrusion.

Applications with smaller throughputs require the smallest booster pumps. Oerlikon Barmag offers these in the well-known "in-line design", which are easy to integrate into an extrusion line.

The heating is carried out using heating plates instead of heating cartridges, which – with a high degree of operating safety – enable uniform heating of the entire pump unit. Compact drive units, comprising geared motor and holder for centric positioning of pump and drive, round off the program.

This series can be used for back pressures of up to 250 bar. A recommended speed range of between 10 and 40 rpm – depending on the viscosity and lubricity of the conveying medium – permits throughputs of between approx. 4 and 100 l/h.



# Technical data

## **GCB51G-1-100Z**

throughput capacity [cc/rev.]: 5  
heating power [kW]: 1,6  
drive power [kW]: 1,5  
pump weight approx. [kg]: 25  
complete unit weight approx. [kg]: 85

## **GCA01G-1-100Z**

throughput capacity [cc/rev.]: 10  
heating power [kW]: 1,6  
drive power [kW]: 1,5  
pump weight approx. [kg]: 25,5  
complete unit weight approx. [kg]: 85,5

throughput capacity [cc/rev.]: 25  
heating power [kW]: 1,6  
drive power [kW]: 1,5  
pump weight approx. [kg]: 27  
complete unit weight approx. [kg]: 87

## **GCA51G-1-100Z**

throughput capacity [cc/rev.]: 15  
heating power [kW]: 1,6  
drive power [kW]: 1,5  
pump weight approx. [kg]: 26  
complete unit weight approx. [kg]: 86

throughput capacity [cc/rev.]: 30  
heating power [kW]: 1,6  
drive power [kW]: 2,2  
pump weight approx. [kg]: 27,5  
complete unit weight approx. [kg]: 105,5

## **GCB01G-1-100Z**

throughput capacity [cc/rev.]: 20  
heating power [kW]: 1,6  
drive power [kW]: 1,5  
pump weight approx. [kg]: 26,5  
complete unit weight approx. [kg]: 86,5

throughput capacity [cc/rev.]: 40  
heating power [kW]: 1,6  
drive power [kW]: 2,2  
pump weight approx. [kg]: 29  
complete unit weight approx. [kg]: 107

## **Oerlikon Barmag**

Zweigniederlassung der  
Oerlikon Textile GmbH & Co. KG  
Leverkuser Straße 65  
Postfach 11 02 40  
42862 Remscheid  
Germany  
Phone: +49 21 91/67-0  
Fax: +49 21 91/67-17 94  
www.barmag.oerlikontextile.com  
pumpsales.barmag@oerlikon.com

OBA 117 e / 4/2009  
Studio 45 / Koch  
Subject to changes

The information supplied in this  
brochure is for guidance only. We  
reserve the right to modify it at any time.